

SYNTEGON

PROCESSING & PACKAGING



SVX Series

The future of vertical packaging.

SVX Series

We just revolutionized vertical packaging.

Say hello to the SVX Series.

It's a dream come true for food producers: A cross seal drive (patents pending) that outperforms your competition from day one – providing the highest output speeds in the industry. With an intuitive user interface plus a footprint so small it integrates seamlessly into new and existing packaging lines. But there's more: Synexio cloud connection allows you to monitor every significant KPI in real-time. And with a value-packed Service Agreement you're set for future-proof productivity. Maximize uptime! Get ready to optimize your efficiency, predict costs and simplify your world.

Why SVX?

Just ask our experts.



“ MAURICE HENNISSSEN
MECHANICAL SYSTEM ARCHITECT

Within the new SVX we developed a brand new cross seal drive that is patents pending. It's very compact, and the fastest in the market using state-of-the-art technology.

KARIN COUWENBERG “
MECHANICAL LEAD ENGINEER

We created curved sliding doors in the front of the machine. This gives easy access to all parts within the bag-forming area without obstructing the walkway.



“ NICK WINTERS
MAINTENANCE ENGINEER

The SVX series is designed for service to increase maintainability, supportability and reliability.

REMCO BOSMAN “
IoT SOLUTIONS ENGINEER

The SVX is equipped with Synexio: our powerful software solution, enabling you to access the world of smart production and optimize your uptime.



Reason 1:

Built to stay ahead.

SVX – a machine that evolves with fast changing market needs and engineered to future-proof your operations.

Do you want to use more sustainable packaging materials? No problem.

The revolutionary cross seal drive is built for the highest output in the industry.

And its modular design allows for easy upgrades to produce different pack styles without excessive investments.

SVX: Future-proof.

The SVX Series gives you the flexibility to upgrade in the future. You will be able to run all popular bag styles including bags with corner seals and/or reclosable zippers (e.g. DoyZip).



YOUR BENEFITS

- High output: up to 300 bags per minute, per tube
- Large bag size range: up to 400 mm bag width
- Prepared for all bag styles
- Reliable quality based on excellent control of the film lane and cross sealing process
- Monitoring of machine performance and analysis to optimize production

Cross seal drive system

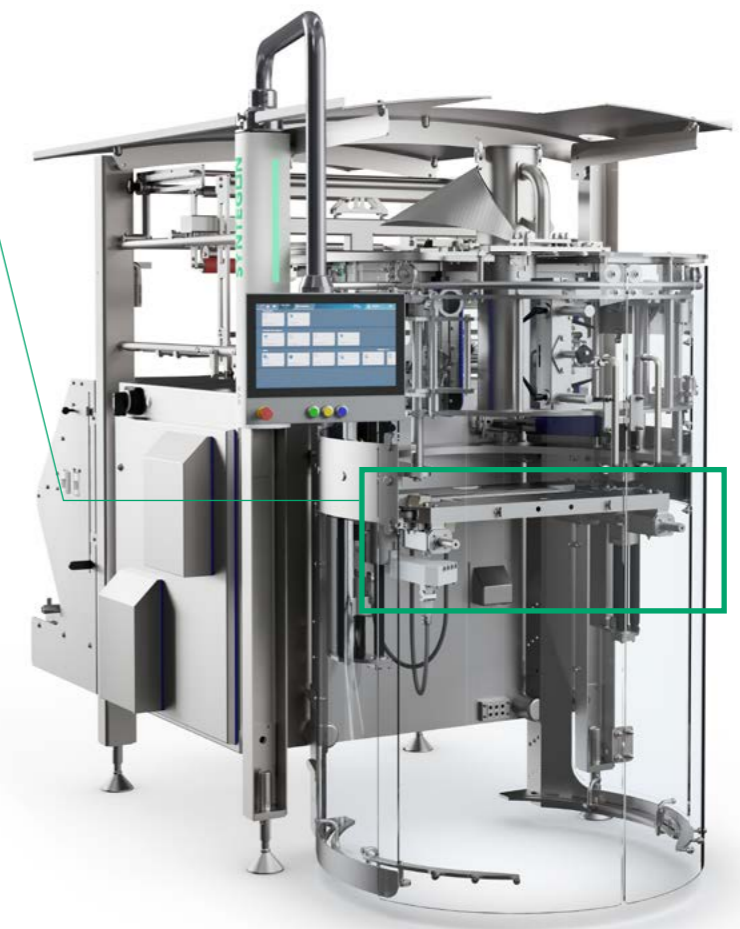
The heart of the SVX Series

The heart of the SVX – the cross sealing unit – consists of 4 independently controlled servo motors. This makes it possible to have more accurate seal force control and best-in-class product-in-seal detection. It's even possible to set a higher seal force on one side for asymmetric bag styles. All from the recipe, so, no mechanical action is required.



BENEFITS: CROSS SEAL DRIVE

- Low inertia for extreme dynamics, enabling higher output
- Best-in-class product-in-seal detection
- Seal force adjustable in HMI
- Maintenance-friendly



Reason 2:

Discover total simplicity.

The SVX Series combines powerful innovations with intuitive functionality.

The result? A machine that makes your life as easy as possible. Easy to integrate: Due to a compact footprint plus curved sliding doors which allow for seamless integration with any production or shop floor layout. Easy to operate: We completely redesigned the user interface in order to mentor your operators through the entire process. Easy to clean: The stainless steel parts reduce contamination by design and allow easy access for cleaning.

SVX: Easy-to-use.

While designing the SVX, we focused on your needs as an operator. So we created a machine that is easy to set up, easy to run and easy to maintain.



YOUR BENEFITS

- Innovative design with front cylinder
- Easy access through curved sliding doors at front
- Access to film lane from left and/or right-hand side at ergonomic height
- Easy to clean based on hygienic design

Easy access and operation

- Maximize your efficiency from all angles

Each SVX model offers you quick and easy access from both sides to adjust settings on printers, labelers, format set angle, etc. Adjustments are possible on-the-fly without needing to stop the machine.

BENEFITS: HMI WITH ADVANCED USER GUIDANCE

- Easy, HMI-supported setup of new recipes
- Less dependence on skilled operators by using less text and more graphics
- Calculation of the position of elements which need to be adjusted manually (e.g. web tracking sensor)
- HMI dashboard can be rotated to have the info available wherever you need it



Reason 3:

Make unplanned downtime a thing of the past.

Created by a multidisciplinary team of experts – the SVX Series is specifically designed to maximize uptime.

The machine modules are designed for optimized service intervals and quick upgrades whenever you need them. Universal components simplify things even more. Service Agreements ensure maximum uptime and performance guarantees throughout the life cycle of your equipment. Including maintenance and parts, fast access to a helpline and tailored training packages at a fixed price.

SVX: Peace of mind.

SVX machines are created for effortless production. In addition, Service Agreements will cover all aspects of maintenance to secure an efficient start-up and smooth production for your new SVX.



OVER 1,100 DEDICATED EXPERTS DEVOTED TO SUPPORT YOU.

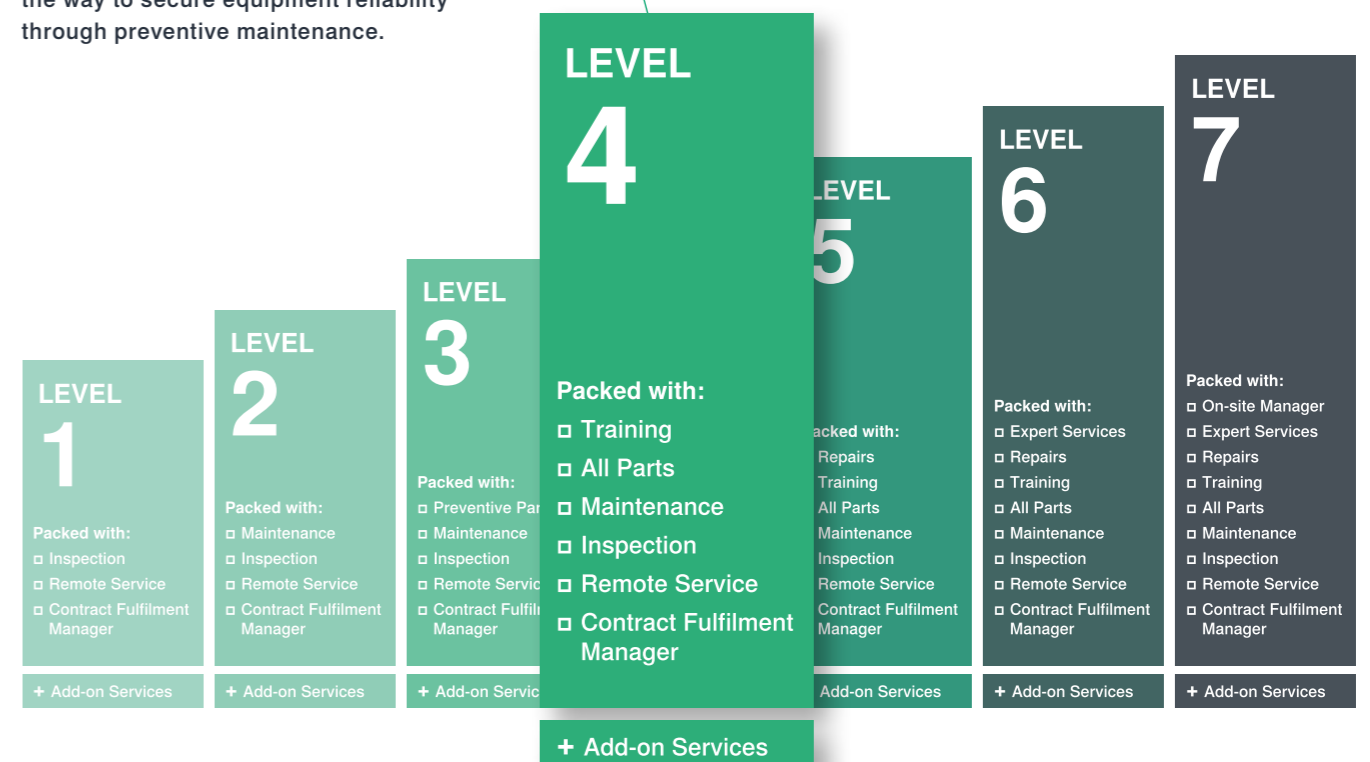
YOUR BENEFITS

- Early involvement of Syntegon Service experts
- Build up know-how and skills through connected partnership
- Together we develop a maintenance strategy that fits your needs
- All of your maintenance needs at a fixed price

Service Agreements

Your key to equipment reliability

Our seven agreements are packed with risk reduction, peace of mind and ultimately, value. Depending on how much support you need – we will find the right service level for you. From level to level, Syntegon’s commitment increases as your responsibility decreases. All at a fixed price. Level 4 is packed with everything you need along the way to secure equipment reliability through preventive maintenance.



Reason 4:

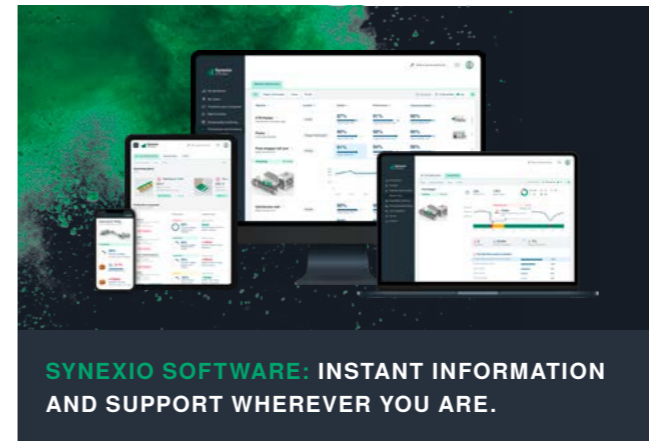
Welcome to the future of smart production.

Convert data into action. The SVX Series comes with a wide range of advanced sensors and an integrated, self-diagnosing system.

With cloud connection to Synexio—our powerful software solution—you get access to the world of smart production. Component monitoring gives you full transparency of your critical machine components in real-time. Continuous data analysis provides actionable insights. By sharing data with our experts, we make sure that your machine is constantly running at the maximum level of efficiency. State-of-the-art digitalization provides value-added data for monitoring and analysis to optimize your production and predict capabilities at all times.

SVX: Transparency.

With our cloud-based software Synexio you can live-track your production progress or identify bottlenecks from wherever you are.



YOUR BENEFITS

- Properly analyze and interpret machine data to identify improvement potential
- Designed and developed to meet the highest data and security standards
- Access whenever and wherever needed
- Provides a clear understanding of environmental impact by energy consumption and the waste produced

Synexio

- Our powerful cloud-based software solution



Collect, evaluate and visualize your production and equipment data. Start your risk-free journey with our Monitor package for machine performance transparency in a UX designed dashboard. Monitor is just the start: Uptime and Empower have additional key features that will boost your productivity.

SYNEXIO MONITOR

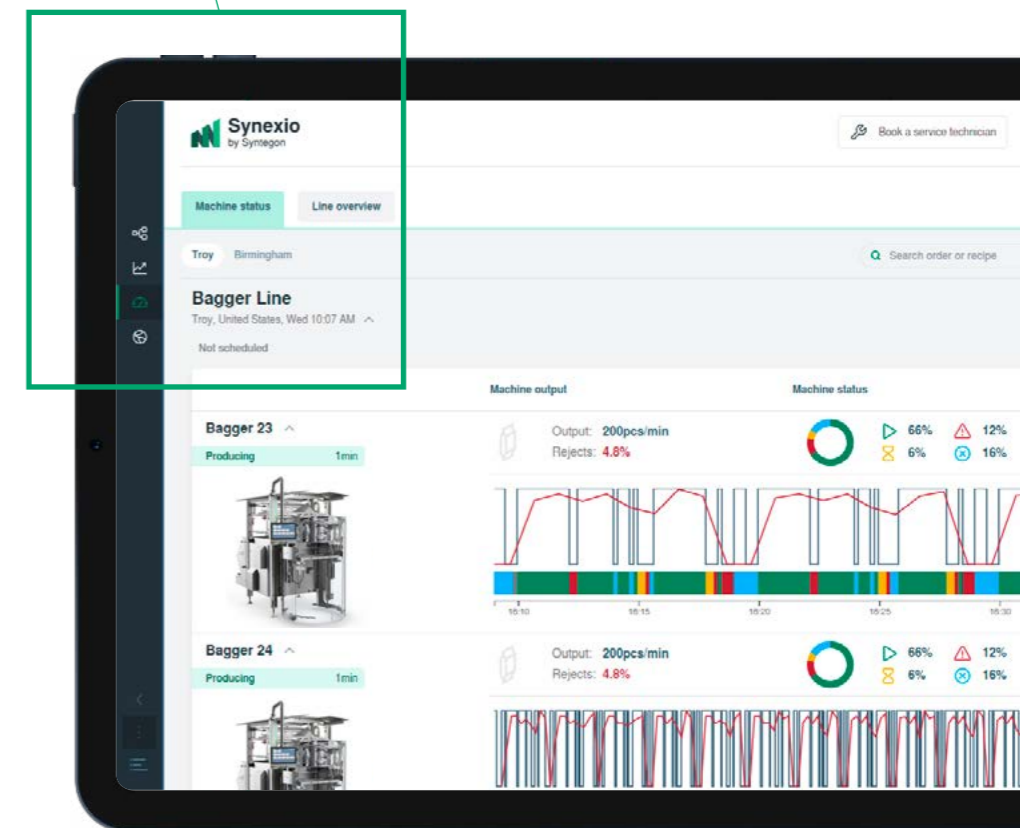
“Monitor” provides transparency by showing visualized data to understand operational performance.

SYNEXIO UPTIME

“Uptime” contains benchmarking and active support. It reveals opportunities for improvement in your process that you might otherwise miss.

SYNEXIO EMPOWER

“Empower” gives you tools like component monitoring and expert training to ensure know-how and maintain your gains year after year.



SVX: The Series.

Our goal was to develop a machine which will become the new benchmark. The result? The fastest, most flexible and easy-to-use vertical bagger in the industry.



SVX: The details.

Future-proof means: ready to go, ready to grow, and ready to be updated for fast changing market trends. To achieve that, our team of experts made sure each and every detail was thought of.



HYGIENIC DESIGN

Stainless steel is hygienic by default. Depending on the environmental conditions we offer three levels of corrosive protection and component selection: Dry, wet and harsh.



INTEGRATED CONTROL CABINET

To reduce the footprint, the control cabinet has been integrated into the machine frame. From each side of the machine one of the two compartments can be accessed. There is a clear separation between high and low voltage. Also both compartments offer a wealth of space for future upgrades.



MACHINE MIRRORING

The compact design allows for full access to important machine settings from both sides. Since there are left and right-handed executions available, operators can now easily and efficiently operate both machines from the pathway in between.



CURVED SLIDING DOORS

The SVX features curved sliding doors around the front cylinder. The doors open individually and do not obstruct the working area when opened.

SVX: Comparison overview.

Your production. Your choice. Based on the demands of our clients, we have developed 3 different designs of the SVX. To make sure that you get the fitting solution for your ecosystem.

Features	Agile	Compact	Duplex
High output		standard	
Cross seal force		8 kN	
Seal pressure in HMI		standard	
Automatic web tracking		standard	
Left- or right-hand version		both	
Hygienic design + stainless steel		standard	
AB controls		option	
Top Dead Center position		715 / 815 / 915 / 1015mm	
Max. flat bag width	400mm	270mm	145mm
Environment	dry, wet or harsh	dry, wet or harsh	dry
DoyZip	option	—	—
Paired setup	—	option	—
Intermittent motion	option	—	—
Single lane reels	N/A	N/A	option

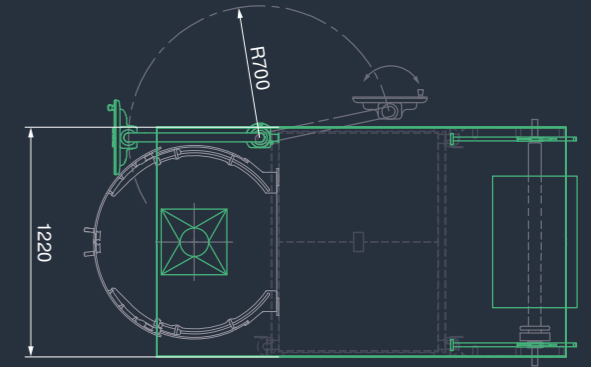
SVX: Footprint overview.

SVX AGILE

Fast and sturdy. The SVX Agile is especially designed to produce all bag styles, small or large.

1220mm wide

- Bag width up to 400mm
- Built for practically all bag styles including corner seal and DoyZip.

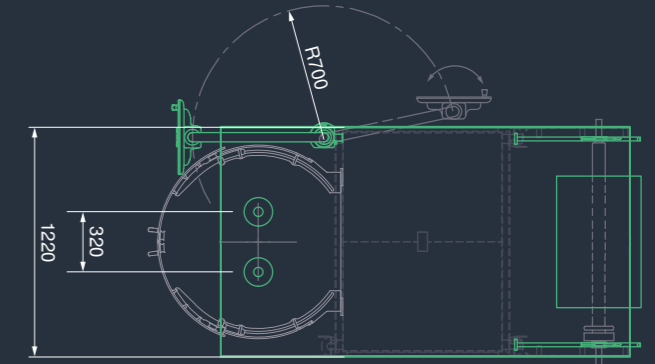


SVX DUPLEX

Two lanes in one machine. The SVX Duplex is the perfect solution for small bags.

1220mm wide

- 2 film lanes in same frame
- Bag width up to 145mm
- Built for various bag styles (pillow bags, gusseted and block-bottom bags)

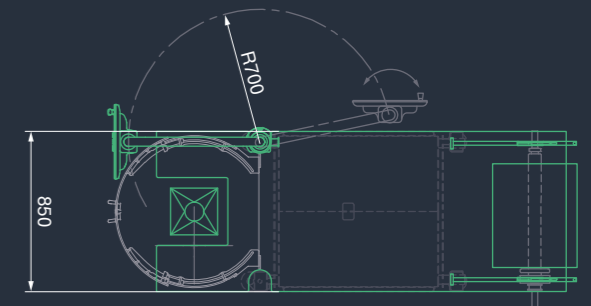


SVX COMPACT

Small footprint. Big output. When space is limited the SVX Compact is the best choice.

850mm wide

- Bag width up to 270mm
- Built for various bag styles (pillow bags, gusseted and block-bottom bags)

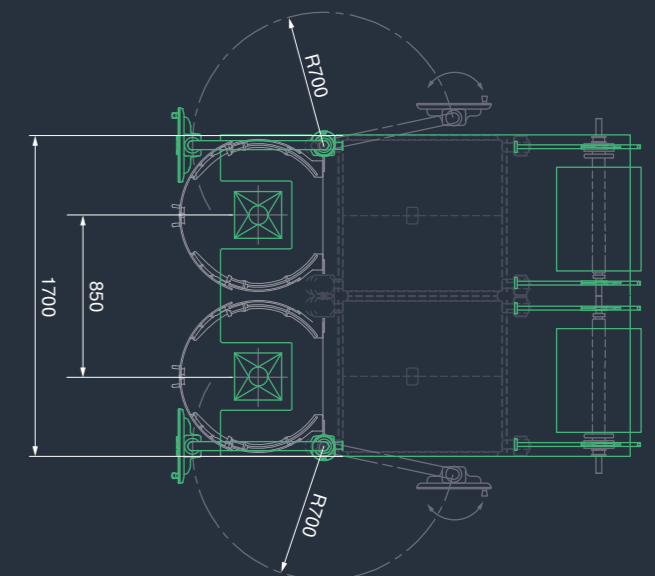


SVX COMPACT (PAIRED)

Make it a double. When you want to maximize your output.

2x 850mm wide

- Total footprint: 1700mm wide
- Mirrored machines
- Pitch 850mm



Contact us.

North America

Mail connectwithus@syntegon.com

Phone +1 715 243 2298

EMEA

Mail salesfood.emea@syntegon.com

Phone +41 58 674 7542

SEA

Mail packaging-cf@syntegon.com

Phone +91 982036 6608

South America

Mail pabr@syntegon.com

Phone +55 11 2117 6800



www.syntegon.com/SVX